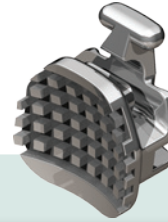


**CANNON ULTRA II™ BRACKET SYSTEM**



**MBT<sup>†</sup> Prescription**

**Maxillary**

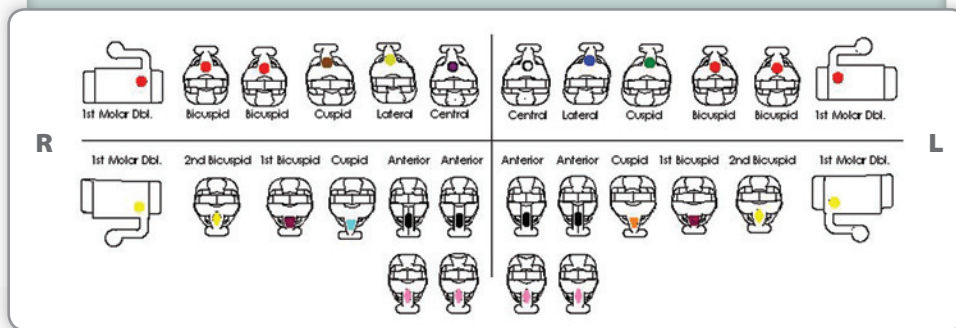
Tooth	Torque	Angle	Rotation	M/D	R/L	ID	Anchor-Lock Pad	
							.018	.022
Central Hk	+17°	+4°	0°	3.5 mm	R	●	85-U1-8RK	85-U1-2RK
					L	○	85-U1-8LK	85-U1-2LK
Lateral Hk	+10°	+8°	0°	3.3 mm	R	●	85-U2-8RK	85-U2-2RK
					L	●	85-U2-8LK	85-U2-2LK
Cuspid Hk	0°	+8°	0°	3.5 mm	R	●	85-U3-8RK	85-U3-2RK
					L	●	85-U3-8LK	85-U3-2LK
1 <sup>st</sup> & 2 <sup>nd</sup> Bicuspid Hk	-7°	0°	0°	3.4 mm	R	●	85-U4-8RK	85-U4-2RK
					L	●	85-U4-8LK	85-U4-2LK

**Mandibular**

Tooth	Torque	Angle	Rotation	M/D	R/L	ID	Anchor-Lock Pad	
							.018	.022
Anterior Hk	0°	0°	0°	2.9 mm	U	●	85-L1-8OUK	85-L1-2OUK
					U	●	85-L1-86UK	85-L1-26UK
Cuspid Hk	0°	+3°	0°	3.4 mm	R	●	85-L3-8RK	85-L3-2RK
					L	●	85-L3-8LK	85-L3-2LK
1 <sup>st</sup> Bicuspid Hk	-12°	0°	0°	3.4 mm	R	●	85-L4-8RK	85-L4-2RK
					L	●	85-L4-8LK	85-L4-2LK
2 <sup>nd</sup> Bicuspid Hk	-17°	0°	0°	3.4 mm	R	●	85-L5-8RK	85-L5-2RK
					L	●	85-L5-8LK	85-L5-2LK

Full Sets	.018	.022
Upper/Lower 5x5 Hooks on 3, 4, & 5	85K-345-18	85K-345-22

**IDENTIFICATION SYSTEM**



**Also available in pre-packaged single case kits for your convenience.**

Please add an -01 to the end of the kit part number (see Full Sets section). Contact us for pricing and quantity requirements.

† The ODP version of the Cannon Ultra II is not implied to be an exact version of any other system, nor do we claim any endorsement of Dr. Cannon.