

## ProFlex™ NICKEL TITANIUM

by Orthodontic Design and Production, Inc.

### All Nickel Titanium Wires are not Created Equal!

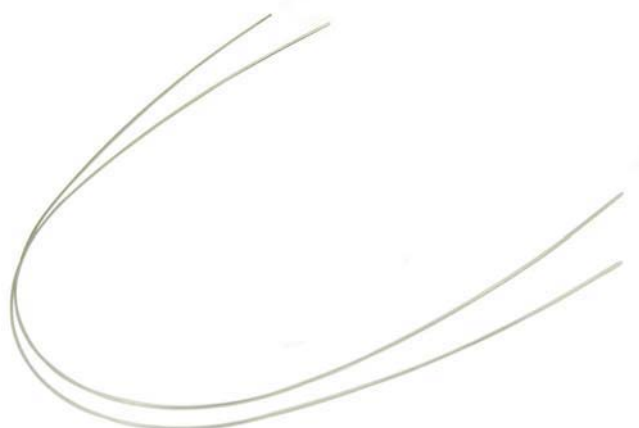
#### ProFlex™ Nickel Titanium Preformed Archwires

This precisely manufactured wire requires excellence in materials and design to perform properly.

- Superelastic NiTi is provided in its austenitic (activated) phase at all times.
- The superb rebound and memory characteristics ensure desired results without the need for adjustment or modification.
- Superelastic NiTi allows for a high degree of deflection without causing deformation of the original archform characteristics.
- Efficiency of performance ensures achievement of objectives without need for multiple staging of archwires as with stainless steel alternatives.
- The highest quality FDA registered medical grade carbon free nickel titanium, providing for superior memory with minimal fracturing or breakage.
- Our nickel titanium wires are extra smooth to avoid friction in the bracket slot, allowing for easier and more efficient treatment.
- Archwire forms and corner radii are precisely fabricated to ensure excellent performance and predictability, especially when applying torque.

#### 10 Pk

Round	Upper	Lower
.012"	W70U-012	W70L-012
.014"	W70U-014	W70L-014
.016"	W70U-016	W70L-016
.018"	W70U-018	W70L-018
.020"	W70U-020	W70L-020
Rectangular	Upper	Lower
.016" x .016"	W70U-1616	W70L-1616
.016" x .022"	W70U-1622	W70L-1622
.017" x .025"	W70U-1725	W70L-1725
.018" x .025"	W70U-1825	W70L-1825
.019" x .025"	W70U-1925	W70L-1925
.021" x .025"	W70U-2125	W70L-2125



### Nothing is more Expensive than Cheap Wire!

#### ProFlex™ Thermal Nickel Titanium Preformed Archwires

ProFlex™ TA are thermal activated archwires manufactured from nickel titanium designed to specifically react to thermal changes.

- Manufactured of specifically designed nickel wire for more consistent performance.
- Improved resiliency provides measurably more resistance to permanent deformation.
- Archwires exhibit true thermal performance. ProFlex™ TA is soft and pliable at room temperature which allows for easier archwire insertion.
- Narrow transformation band from martensite state to austenite state, allowing the wire to work more efficiently.
- Low biological force delivery makes ProFlex™ TA an ideal wire for patients with severe crowding.

#### 10 Pk

Round	Upper	Lower
.014"	W80U-014	W80L-014
.016"	W80U-016	W80L-016
.018"	W80U-018	W80L-018
.020"	W80U-020	W80L-020
Rectangular	Upper	Lower
.016" x .016"	W80U-1616	W80L-1616
.016" x .022"	W80U-1622	W80L-1622
.017" x .025"	W80U-1725	W80L-1725
.018" x .025"	W80U-1825	W80L-1825
.019" x .025"	W80U-1925	W80L-1925
.021" x .025"	W80U-2125	W80L-2125

## ProFlex™ Nickel Titanium Reverse Curve Archwires

### ProFlex™ Reverse Curve Nickel Titanium Preformed Archwires

Reverse curve archwires are a superior method for opening and closing the bite quickly and easily with maximum patient comfort. The posterior arch form is slightly toed in to counter rotations and accentuate the distal offset built into most buccal tubes.



10 Pk			
Super Elastic			
Super Elastic Nickel Titanium			
Round	Upper	Lower	
.016"	W78U-016	W78L-016	
.018"	W78U-018	W78L-018	
Rectangular	Upper	Lower	
.016" x .022"	W78U-1622	W78L-1622	
.017" x .025"	W78U-1725	W78L-1725	
.019" x .025"	W78U-1925	W78L-1925	
.021" x .025"	W78U-2125	W78L-2125	

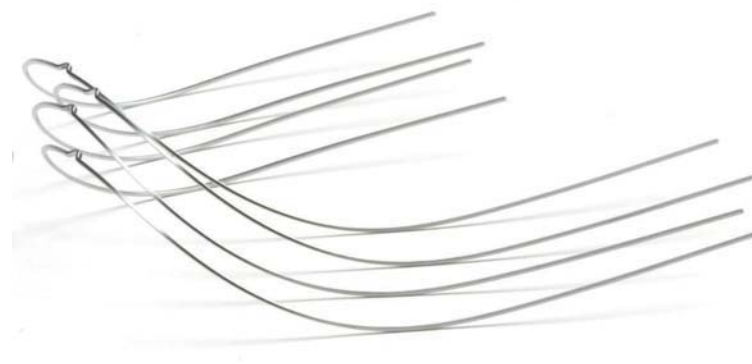
10 Pk			
Thermal Activated			
Thermal Activated Nickel Titanium			
Round	Upper	Lower	
.016"	W88U-016	W88L-016	
.018"	W88U-018	W88L-018	
Rectangular	Upper	Lower	
.016" x .022"	W88U-1622	W88L-1622	
.017" x .025"	W88U-1725	W88L-1725	
.019" x .025"	W88U-1925	W88L-1925	
.021" x .025"	W88U-2125	W88L-2125	

### ProFlex™ SL Reverse Straight Leg Nickel Titanium Preformed Archwires

Our reverse curve straight leg archwires are effective for holding molars upright while performing the mechanics of opening and/or closing the bite, leveling and aligning the occlusal plane or retracting.

- Long "legs" provide additional length to accommodate treatment of extraction cases.
- Protects against bite collapse in extraction areas.
- Excellent for mandibular central teeth intrusion and leveling.

10 Pk			
Round	Upper	Lower	
.016"	W68U-016	W68L-016	
.018"	W68U-018	W68L-018	
Rectangular	Upper	Lower	
.016" x .022"	W68U-1622	W68L-1622	
.017" x .025"	W68U-1725	W68L-1725	
.019" x .025"	W68U-1925	W68L-1925	
.021" x .025"	W68U-2125	W68L-2125	



# Wire Products

## ProFlex™ Pre-Torqued Nickel Titanium Archwires

### Get S.E.T. for Torque!

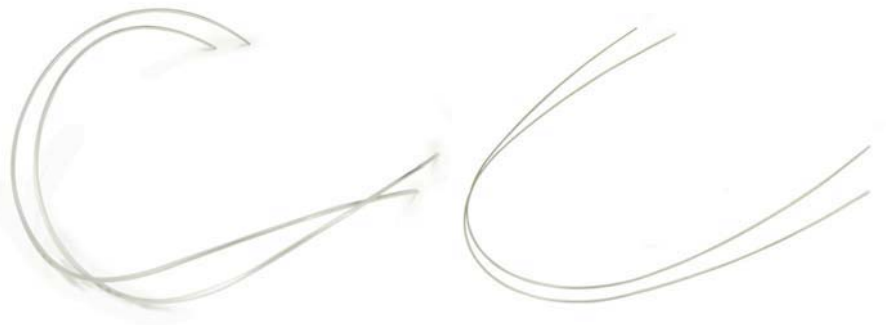
These remarkable and exclusive austenitic nickel titanium archwires are pre-torqued in the anterior segment using advanced computer aided wire forming apparatus and techniques. Consistent and predictable *actual torque* values are created by calculating recommended slot size, wire dimensions, corner radii, and the torque built into the archwire.

### ProFlex™ S.E.T. Anterior Pre-Torqued Nickel Titanium Archwires

- Early introduction of torque in upper centrals and laterals with wires that are less than full size to aid insertion.
- A simple and predictable method for introducing uprighting torque into the lower anterior segment to avoid “rollout” problems common with straight wire systems. Wires are less than full size relative to the bracket slot to aid insertion, and nickel titanium provides the low force and high resiliency desirable for an initial archwires.

5 Pk

ProFlex™ SET Anterior Pre-Torqued		5pk Wires	
Edgewise Diameter	Built In Torque	Anterior Arch Size	Order Code
.016" x .022"	20	28	W75-1622-28
.016" x .022"	20	34	W75-1622-34
.016" x .022"	20	38	W75-1622-38
.017" x .025"	20	28	W75-1725-28
.017" x .025"	20	34	W75-1725-34
.017" x .025"	20	38	W75-1725-38
.018" x .025"	20	28	W75-1825-28
.018" x .025"	20	34	W75-1825-34
.018" x .025"	20	38	W75-1825-38
.019" x .025"	20	28	W75-1925-28
.019" x .025"	20	34	W75-1925-34
.019" x .025"	20	38	W75-1925-38
.021" x .025"	20	28	W75-2125-28
.021" x .025"	20	34	W75-2125-34
.021" x .025"	20	38	W75-2125-38



#### Wire Identification and Insertion Information

All torqued wires are marked with a purple dash indicating the direction of torque.



### ProFlex™ S.E.T. Reverse Curve Anterior Pre-Torqued Nickel Titanium Archwires

- Excellent wire for the correction of Class II deep overbite cases.
- Early introduction of torque in upper centrals and laterals with wires that are less than full size to aid insertion.
- A simple and predictable method for introducing uprighting torque into the lower anterior segment to avoid “rollout” problems common with straight wire systems. Wires are less than full size relative to the bracket slot to aid insertion, and nickel titanium provides the low force and high resiliency desirable for an initial archwire.

5 Pk

S.E.T. Reverse Curve Anterior Pre-Torqued			Reverse-SE	Reverse-TA
Edgewise Diameter	Built In Torque	Anterior ArchWires	5/pk Wires	5/pk
.017" x .025"	20	34	W90-1725-34	W93-1725-34
.017" x .025"	20	38	W90-1725-38	W93-1725-38
.019" x .025"	20	34	W90-1925-34	W93-1925-34
.019" x .025"	20	38	W90-1925-38	W93-1925-38

## ProFlex™ Separating & De-Impacting Springs

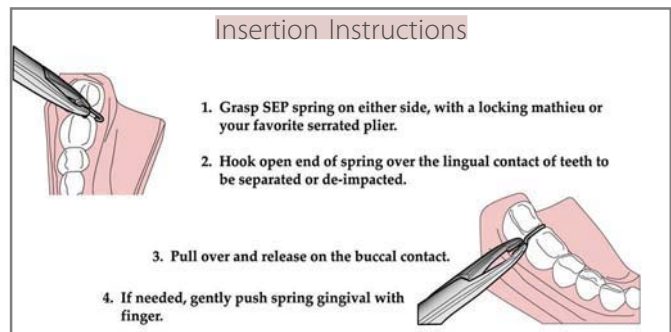
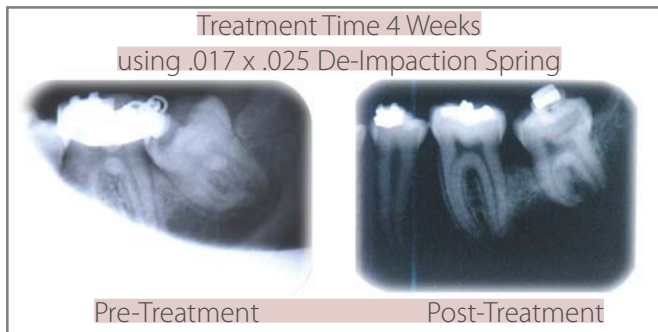
### ProFlex™ Separating and De-Impaction Springs

ODP's separating springs were designed to effectively separate or de-impact posterior teeth with minimal patient discomfort. Offset leg design, coupled with rectangular nickel titanium wire, provides the most efficient method of separating and de-impacting, while looped over safety ends ensure peace of mind.

- De-Impacting springs.
- Separate posterior teeth.
- Looped over safety ends.
- Canted construction facilitates de-impacting and separating.
- Rectangular nickel titanium wire.



15 Pk			
Separating Spring	Narrow	Wide	Long
.016" x .022"	M125-1622	M126-1622	--
De-Impacting Spring	Narrow	Wide	Long
.017" x .025"	--	--	M130-1725



### Nickel Titanium Ice Stylus

Engages Nickel Titanium Wire Easily

Simply fill this ice stylus with water and place it in the freezer. Our compact, lightweight ice stylus allows you to easily put all types of nickel titanium into its softest (martensitic), most flexible state.

Order Number:

800-242

Order by Fax: (760) 734 - 1735  
e-mail: info@odpinc.com

# Wire Products

## ProFlex™ Nickel Titanium Coil Springs & Auxiliaries

### ProFlex™ Closed Coil Springs

A superior method for Class II mechanics such as cuspid retraction and space closure. Ligature wire is pre-threaded through the eyelets to tie the spring to the bracket, molar, or archwire hooks and posts. The gentle, continuous force levels last far longer than conventional elastics, pletcher springs, or stainless steel coil springs.



10 Pk					
Coil Length	5mm	7mm	9mm	12mm	15mm
w/o Ligature	M140-01	M140-02	M140-03	M140-04	M140-05
w/ Ligature	M143-01	M143-02	M143-03	M143-04	M143-05

### ProFlex™ Distalizing, Stopwound Coil Springs

Designed for maximum flexibility and constant force at any length. May be cut in the middle of any stop wound for desired length. Used for distalizing or creating space in the arch.

Available in packages of three 7" lengths, or 15" spools.



3 Pk		
Archwire Diameter		7" spool
.009" x .036"	Light (100g)	M148-01
.010" x .036"	Medium (150g)	M148-02
.011" x .036"	Heavy (200g)	M148-03

15" Spool		
Archwire Diameter		15" spool
.009" x .036"	Light (100g)	M149-01
.010" x .036"	Medium (150g)	M149-02
.011" x .036"	Heavy (200g)	M149-03

### ProFlex™ Open & Closed Coil Springs

The most efficient method for opening or closing space within the arch. The gentle yet effective force promotes patient comfort and biocompatibility.



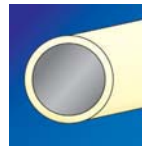
3 Pk		
7" lengths 3/Pk	Open	Closed
.010" x .030"	M145-01	M144-01

15" Spool		
15" spool	Open	Closed
.010" x .030"	M146-01	M147-01
.012" x .030"	M146-02	---

## Coated, B.T.M., & Blue Nickel Cobalt Archwires

### Coated Archwires

ODP offers tooth-colored archwires to complement the visual values important to many orthodontic patients. Subtle and natural in appearance, our aesthetic line of archwires allows high performance wires to be applied to cosmetic appliances for predictable and effective treatment without compromising technique or results.



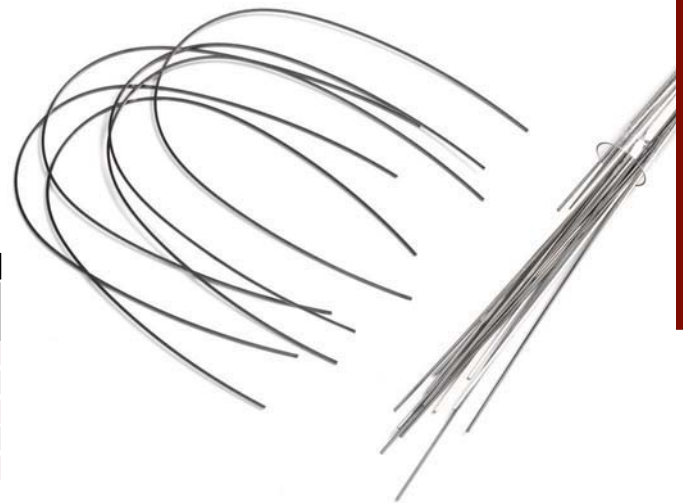
\*Tooth colored outer coating



10/pk Round/Rect.	Nickel Titanium		Stainless Steel	
	Upper	Lower	Upper	Lower
.014"	W71U-014	W71L-014	W72U-014	W72L-014
.016"	W71U-016	W71L-016	W72U-016	W72L-016
.018"	W71U-018	W71L-018	W72U-018	W72L-018
.016" x .016"	W71U-1616	W71L-1616	W72U-1616	W72L-1616
.016" x .022"	W71U-1622	W71L-1622	W72U-1622	W72L-1622
.017" x .025"	W71U-1725	W71L-1725	W72U-1725	W72L-1725
.018" x .025"	W71U-1825	W71L-1825	W72U-1825	W72L-1825

### B.T.M. Beta Titanium Molybdenum Archwires

ODP's True Form-BTM Beta Titanium Molybdenum Archwires combine the workability of stainless steel with the flexibility and reduced force of nickel titanium. As with all of ODP's nickel titanium archwires and nickel titanium components, B.T.M. is carbon free, minimizing fracturing and breakage.



10/pk Rectangular	Archwire		25/pk 14" Length
	Upper	Lower	
.016" x .022"	W60U-1622	W60L-1622	W60S-1622
.017" x .025"	W60U-1725	W60L-1725	W60S-1725
.018" x .025"	W60U-1825	W60L-1825	W60S-1825
.019" x .025"	W60U-1925	W60L-1925	W60S-1925
.021" x .025"	W60U-2125	W60L-2125	W60S-2125

### Blue Nickel Cobalt Preformed Archwires

Blue Nickel Cobalt is a heat treatable alloy wire that can be welded with low heat and soldered without becoming brittle. It exhibits superior physical properties and a longer working range when compared to stainless steel. Blue Nickel Cobalt is excellent for edgewise arches, lingual arches, retainers, and removables. Equivalent to Blue Elgiloy.

10/pk Round/Rect.	Upper		Lower	
	Upper	Lower	Upper	Lower
.014"	W64U-014	W64L-014	W64U-014	W64L-014
.016"	W64U-016	W64L-016	W64U-016	W64L-016
.018"	W64U-018	W64L-018	W64U-018	W64L-018
.016" x .016"	W64U-1616	W64L-1616	W64U-1616	W64L-1616
.016" x .022"	W64U-1622	W64L-1622	W64U-1622	W64L-1622
.017" x .025"	W64U-1725	W64L-1725	W64U-1725	W64L-1725
.018" x .025"	W64U-1825	W64L-1825	W64U-1825	W64L-1825
.019" x .025"	W64U-1925	W64L-1925	W64U-1925	W64L-1925
.021" x .025"	W64U-2125	W64L-2125	W64U-2125	W64L-2125

